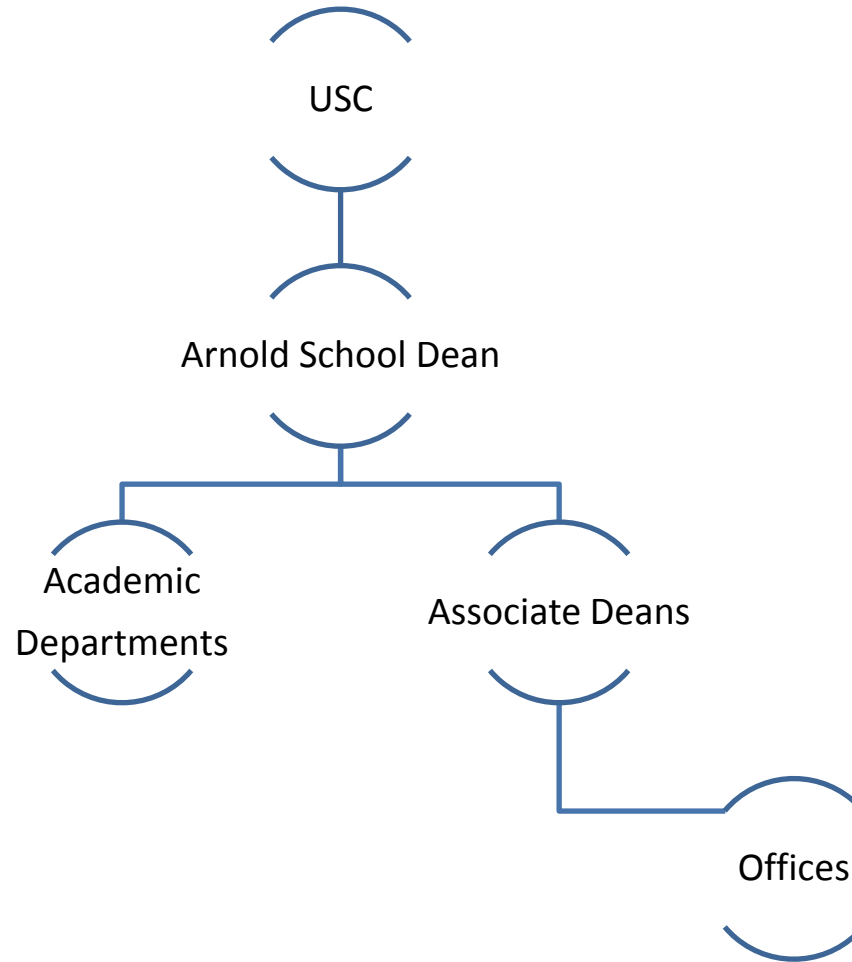


Partnering with Universities for Community Health

Lillian U. Smith, DrPH, MPH



Arnold School of Public Health



Organization



Healthy South Carolina Initiative

Community Transformation Grant :

project to reorganize communities to focus on risk factors (tobacco use, poor nutrition, physical inactivity, and heart disease and stroke) and eliminate health disparities through **policy, systems, and environmental** changes (CDC, 5 years, \$4.6m/year)

Community Engagement Objectives:

- County level community groups that address multiple risk factors and develop comprehensive Community Health Assessments/Improvement Plans
- Build capacity for empowerment and sustainability at community level

MAPP - YOUR COMMUNITY ROADMAP TO HEALTH!

A Healthier Community

Action Cycle

Evaluate Implement Plan

Formulate Goals and Strategies

Identify Strategic Issues

Community Themes & Strengths Assessment

Forces of Change Assessment

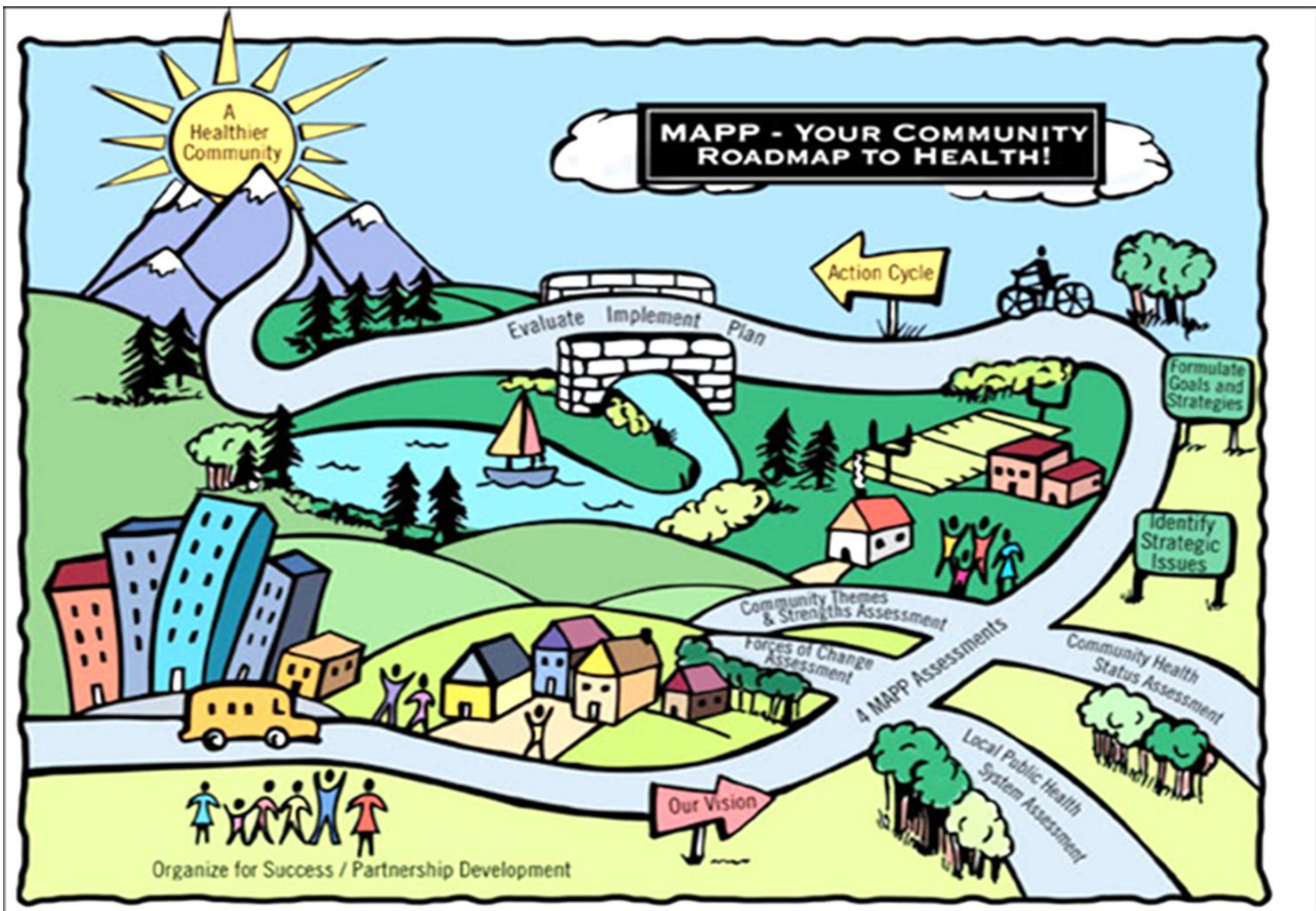
4 MAPP Assessments

Community Health Status Assessment

Local Public Health System Assessment

Our Vision

Organize for Success / Partnership Development



OPHP CE Capacity

- Assisting with development of the Toolkits, Parts 1 & 2
- Community of Practice for Community Engagement
 - Staffing and facilitating meetings
 - Developing online tool and training plan
- Providing technical assistance
- Continuing Education Courses (professionals/community)
 - Updating existing course on CA to be CE Part 1
 - Developing CE Part 2
 - Providing training on Facilitation Methods
- Academic Courses (pre-professional)

Academic Courses for HSCI

- Service Learning
 - Academic Course for upper-level undergraduates across SC
 - All disciplines, including Public Health
- Capstone Project
 - Academic Course for undergraduate seniors
 - Public Health
- Practicum
 - Academic course for Public Health graduate students

Connecting with Practice



- Visit <http://mysph.sc.edu>
- Find News & Calendar
- Click on the **Opportunity Manager**
- Complete Your Profile
- Send Feedback to mysph@mailbox.sc.edu

